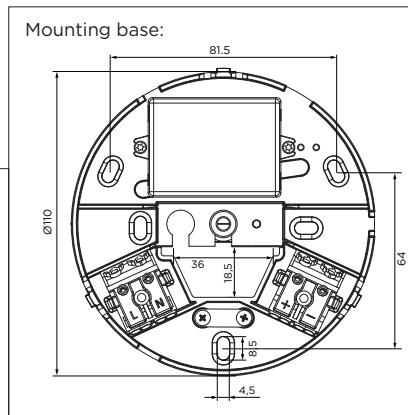
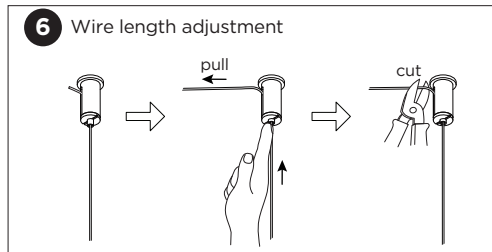
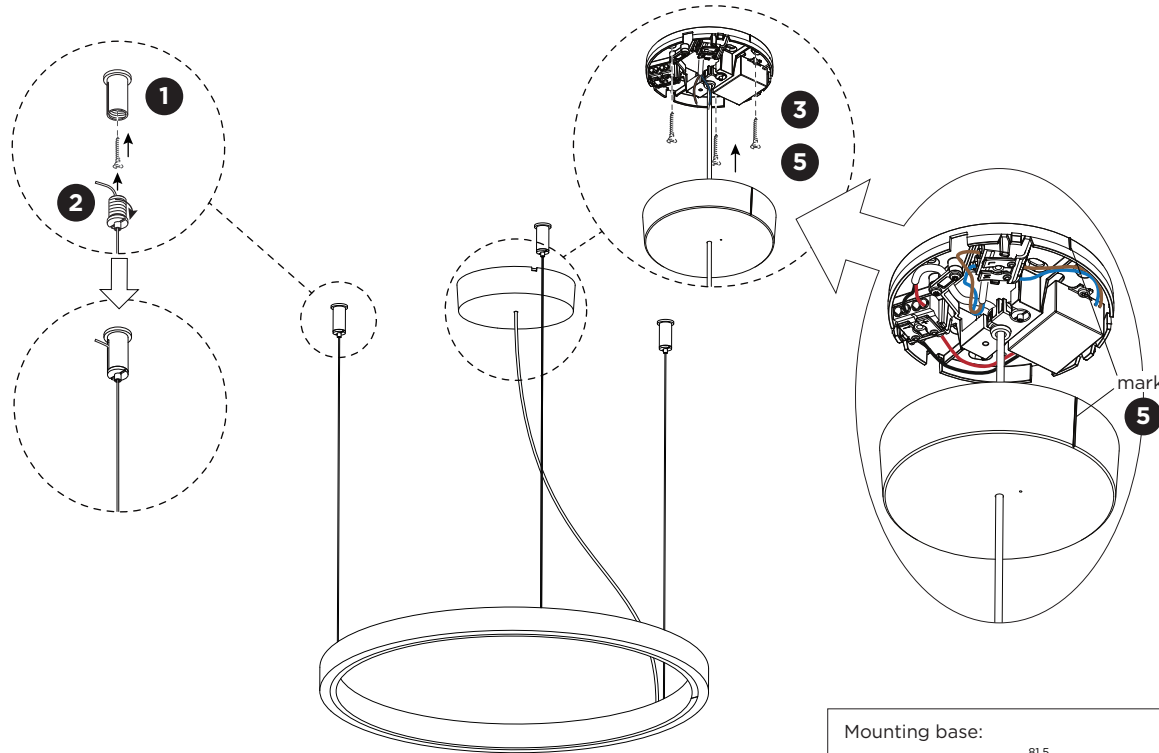
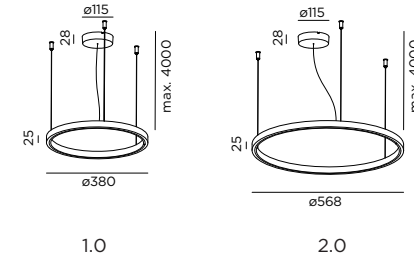


KUJO CEILING SUSPENDED

INSTALLATION INSTRUCTIONS | APRIL 2024

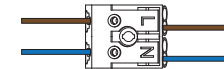


DIMENSIONS



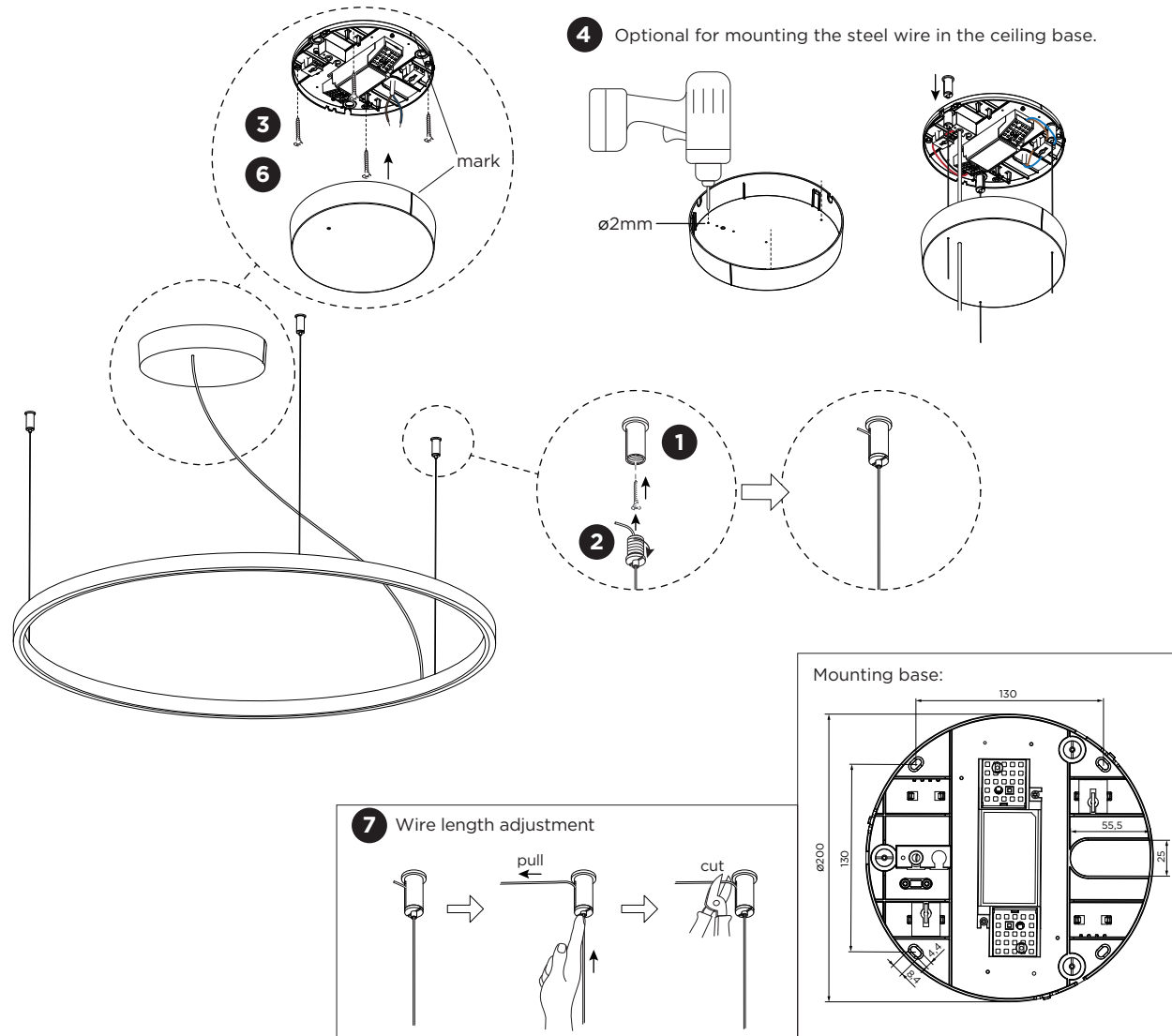
MOUNTING INSTRUCTION

- 1 Screw out the top pieces of the cable holders and fix them on the ceiling with screws (screws are not included).
- 2 Screw the cable holders back to the top piece.
- 3 Remove the cover of the mounting base by pulling and mount the base on the ceiling with screws (screws are not included).
- 4 **POWER CONNECTION**
Connect to 220-240V.
- 5 Align the marks on both of the mounting base and the cover. Push the cover on the mounting base until it clicks.
- 6 Adjust the wires to the required length.

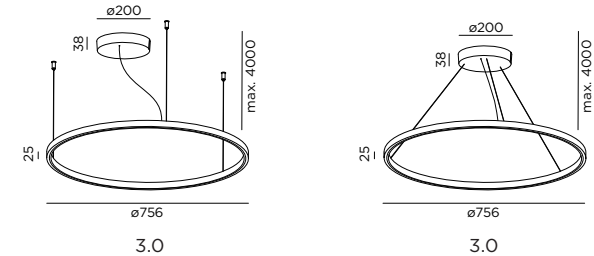


KUJO CEILING SUSPENDED

INSTALLATION INSTRUCTIONS | APRIL 2024

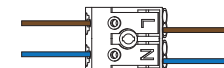


DIMENSIONS



MOUNTING INSTRUCTION

- 1** Screw out the top pieces of the cable holders and fix them on the ceiling with screws (screws are not included).
- 2** Screw the cable holders back to the top piece.
- 3** Remove the cover of the mounting base by pulling and mount the base on the ceiling with screws (screws are not included).
- 4** Optional for 3.0: for mounting the steel wire in the ceiling base, drill three holes in the cover. Mount the wire lockers from the backside of the mounting base before screwing it to the ceiling. Pull the steel wires through the wire lockers.
- 5 POWER CONNECTION**
Connect to 220-240V.
- 6** Align the marks on both of the mounting base and the cover. Push the cover on the mounting base until it clicks.
- 7** Adjust the wires to the required length.



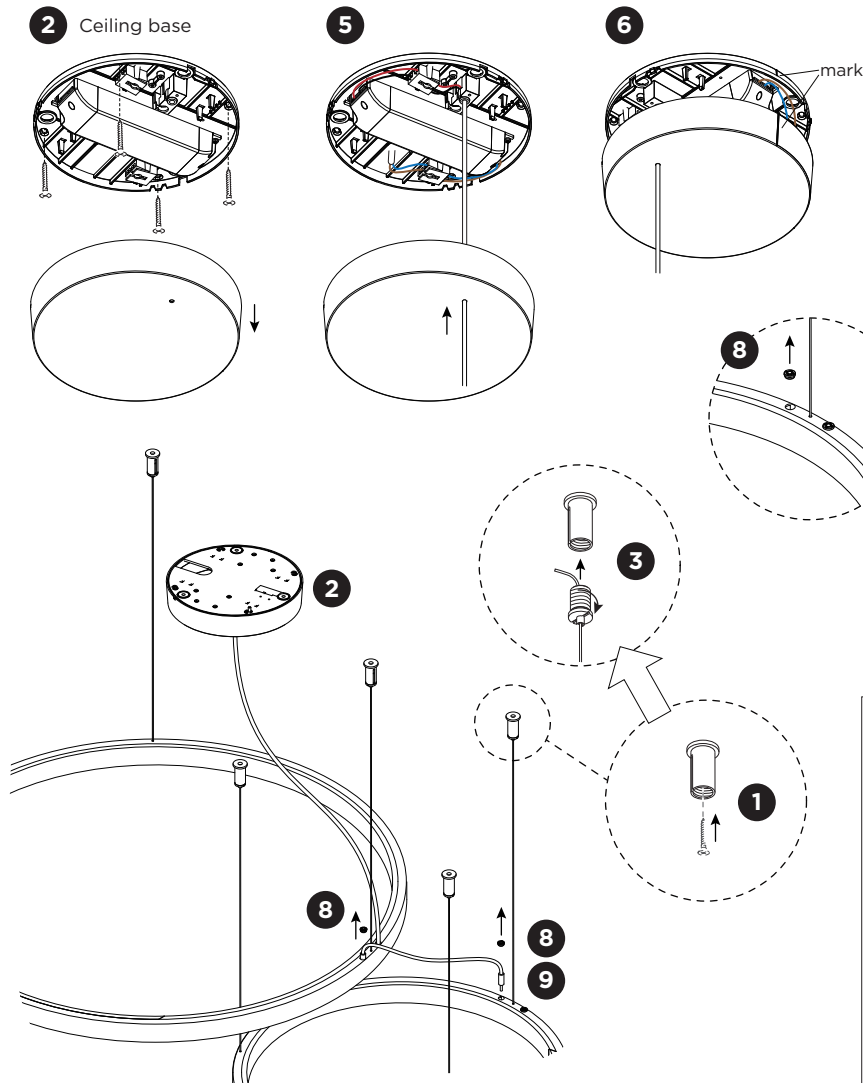
WEVER & DUCRÉ
LIGHTING

WEVER & DUCRÉ BV

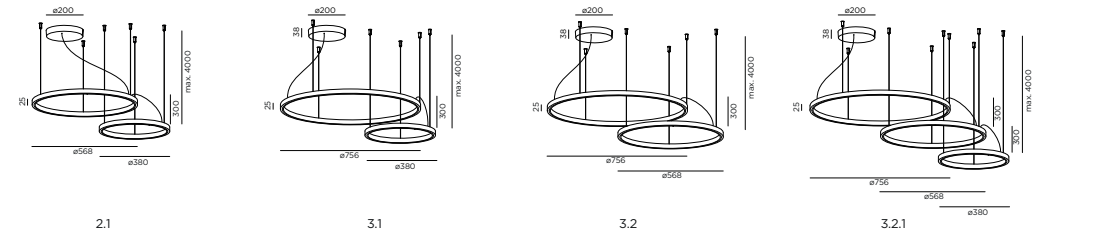
Spinnerijstraat 99/21, 8500 Kortrijk, Belgium
weverducre.com

KUJO CEILING SUSPENDED

INSTALLATION INSTRUCTIONS | APRIL 2024

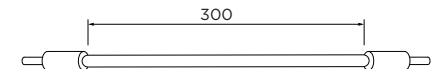


DIMENSIONS

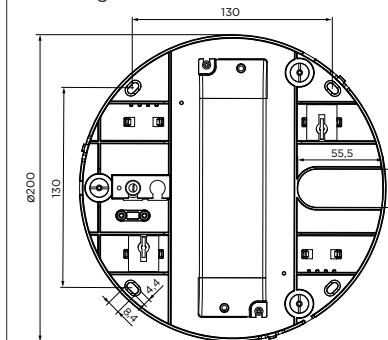


MOUNTING INSTRUCTION

- 1 Screw out the top pieces of the cable holders and fix them on the ceiling with screws (screws are not included).
- 2 Remove the cover of the mounting base by pulling and mount the base on the ceiling with screws (screws are not included).
- 3 Screw the cable holders back to the top piece.
- 4 **POWER CONNECTION**
Connect to 220-240V.
- 5 Pull the cable through the cover and connect the cables in the ceiling base.
- 6 Align the marks on both of the mounting base and the cover. Push the cover on the mounting base until it clicks.
- 7 For the positioning of the rings, take into account the in between lengths of the connection cables.
- 8 To connect the luminaires, remove the covers from the needed holes. All holes can be used as outlet as well as inlet.
- 9 Connect the cables to the luminaires.



Mounting base:



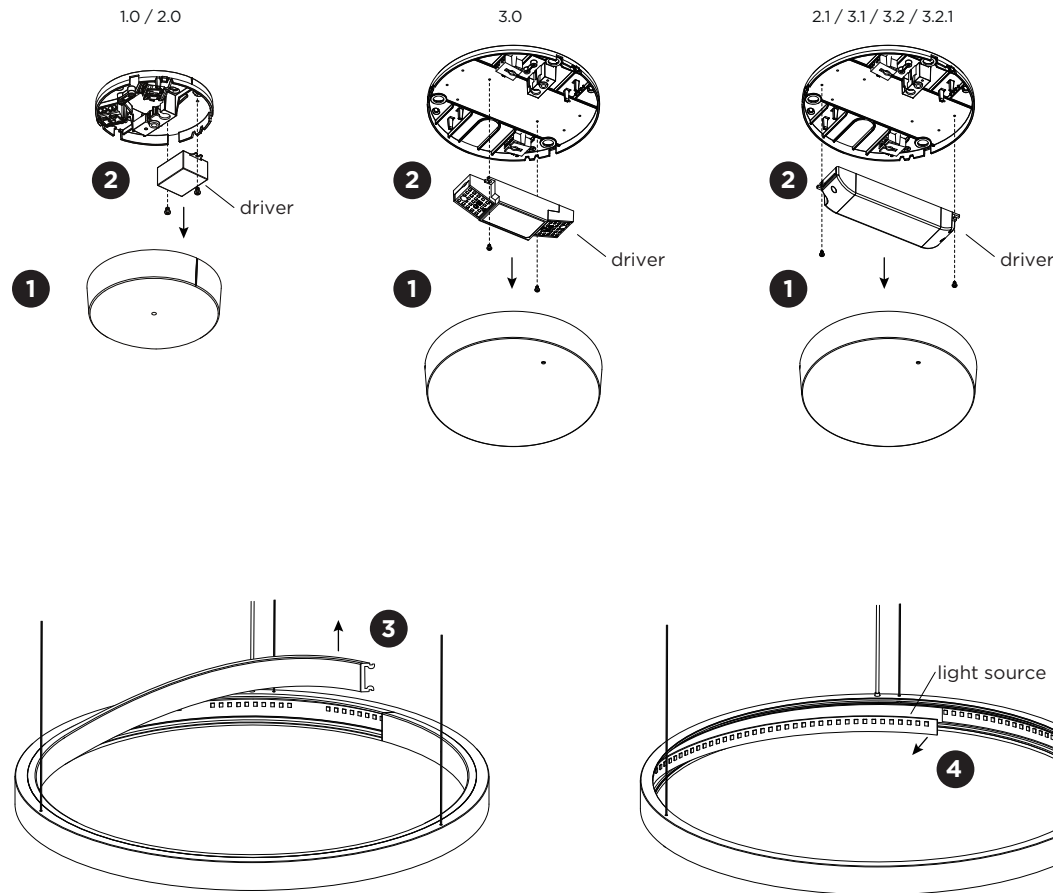
WEVER & DUCRÉ
LIGHTING

WEVER & DUCRÉ BV

Spinnerijstraat 99/21, 8500 Kortrijk, Belgium
weverducre.com

KUJO CEILING SUSPENDED

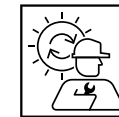
INSTALLATION INSTRUCTIONS | APRIL 2024



DISMOUNTING AND RECYCLING INSTRUCTIONS

Light source & driver

- 1 Pull down the cover from the mounting base.
- 2 Disconnect the wires and unscrew the driver to remove it.
- 3 Remove the silicone cover by pulling it off.
- 4 Pull out the light source to remove it.



The light source is replaceable by Wever & Ducreé or by a professional with explicit authorisation. For more information please contact your local Wever & Ducreé customer service point.



The driver can be replaced by the end user.



This luminaire contains a light source with the energy class E.