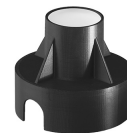
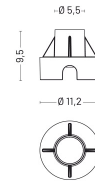


Car-Go_r 50 | 3 W | diffuse | Floor recessed

Drive over 500 Kg | 20 km/h

Technical Specifications

Source lamp	LED 3 W
Total wattage	3
Voltage	24 Vdc
Control	Power supply not included (other controls on request)
Luminous flux (*Source flux)	70 lm (350 lm*) @ 3000 K
Luminous efficacy	24 lm/W @ 3000 K
Light Temperature	2700 K
McADAM steps	3
Beam	diffuse
CRI	>90
Life time	L80-B15 > 60.000 h Ta 40°C
IP rating	67
IK rating	10
Insulation class	III
Note	Control on request: DALI - 1/10V - DMX - TRIAC Light control on request: 2200K - 4000K - RGBW



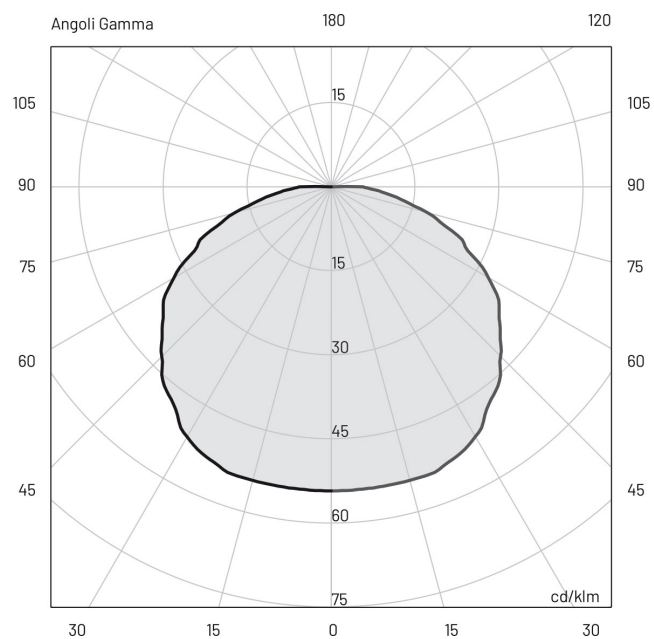
Materials

Body	Extruded aluminium EN AW6026
Diffuser	Opal glass
Finishing	White - Glass

E (lux)

H(m)	lux @ 3000 K	Ø(m)
1.00	19	4.26
2.00	5	8.52
3.00	2	12.77
4.00	1	17.03
5.00	1	21.29

Photometry



Included accessories

- 1 m length cable -05RN-F
- Housing box

Available accessories

0303003	Glass lifting suction pad
00KCG.01	Recessed box adjusting kit
0404M011	Single connection IP68
0404M019	Three-way connection box mini
0409BT016	Transformer _ 24 Vdc - 100 W connect up to 30 pcs



0409BT014

Transformer _ 24 Vdc - 12 W
connect up to 4 pcs



0409BT015

Transformer _ 24 Vdc - 25 W
connect up to 8 pcs

