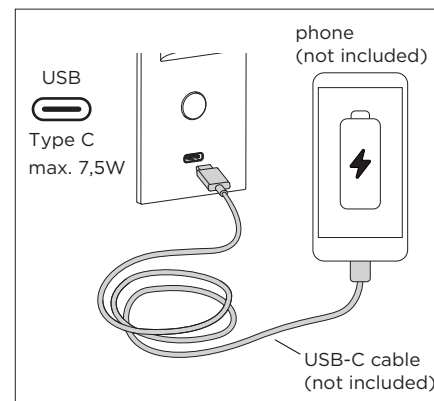
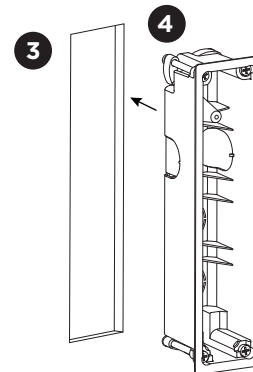
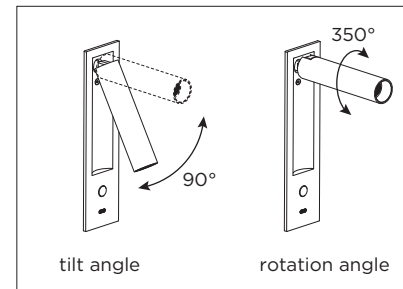
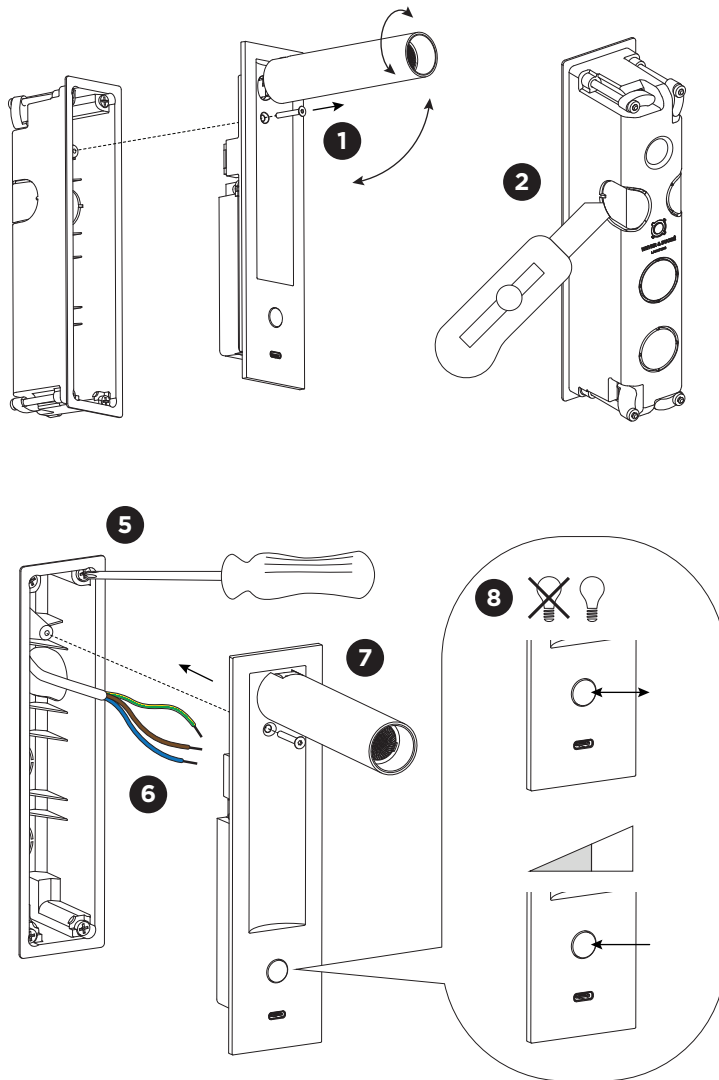
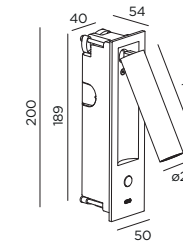


MATCH snooze recessed

INSTALLATION INSTRUCTIONS | MARCH 2025



DIMENSIONS



MOUNTING INSTRUCTION

- 1 Tilt and turn the tube upwards to loosen the screw and remove the fixture from the mounting box.
- 2 Cut the desired hole in the mounting box.
- 3 Make a hole in the wall according to the prescribed dimensions.
- 4 Insert the mounting box in the wall.
- 5 Fix the four screws.
- 6 **POWER CONNECTION**
Connect to 220-240V.

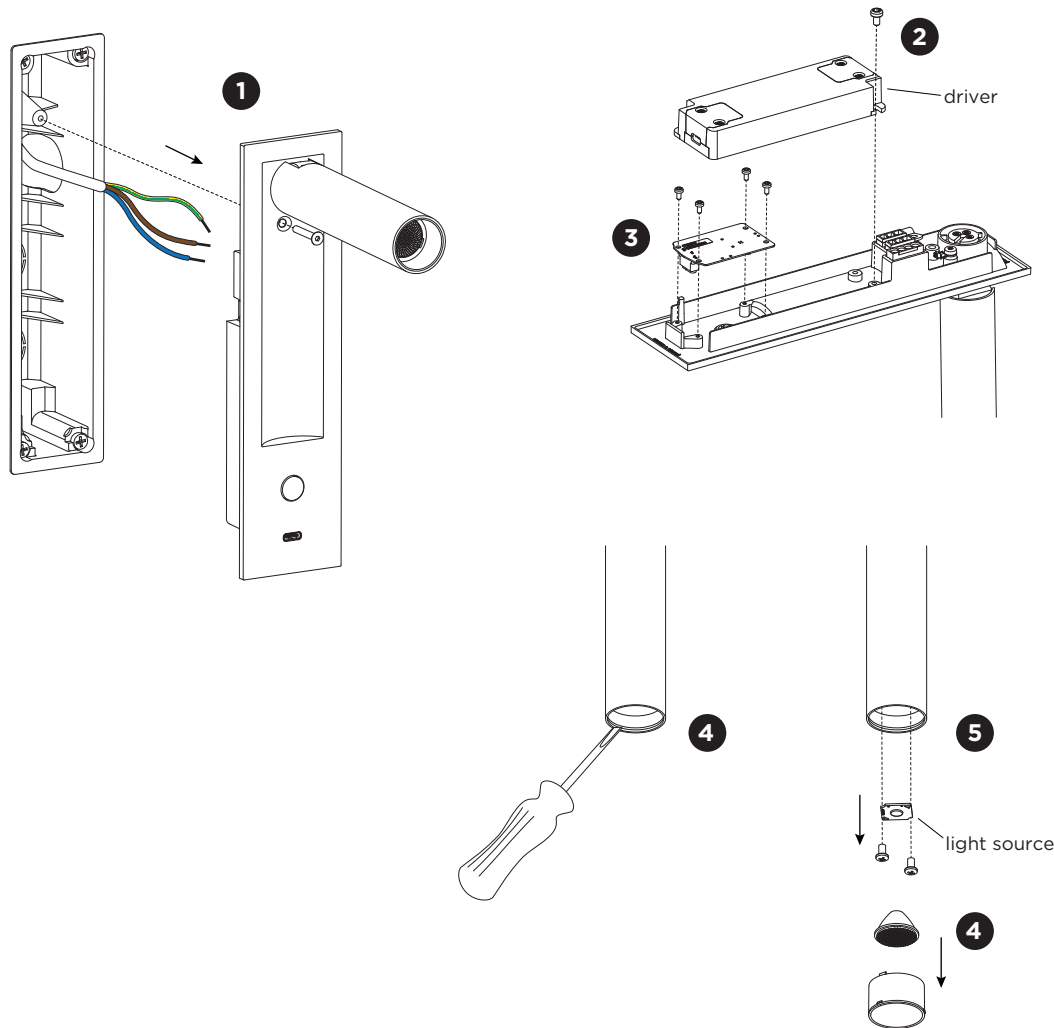


- 7 Screw the fixture back to the mounting base.
- 8 Push the button to turn the light on/off.
Hold the button to dim the light.

PB19-010-970-00_v0

MATCH snooze recessed

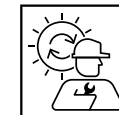
INSTALLATION INSTRUCTIONS | MARCH 2025



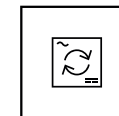
DISMOUNTING AND RECYCLING INSTRUCTIONS

Light source & driver

- 1 Tilt and turn the tube upwards to loosen the screw and remove the fixture from the mounting box.
- 2 Loosen the wires and unscrew the driver to remove it.
- 3 Remove the board by unscrewing it.
- 4 Pull out the snoot using a flat tool and remove the lens.
- 5 Unscrew the light source to remove it.



The light source is replaceable by Wever & Ducreé or by a professional with explicit authorisation. For more information please contact your local Wever & Ducreé customer service point.



The driver can be replaced by the end user.



This luminaire contains a light source with the energy class D.



Use green electricity to light up your luminaire.