

TOKYO

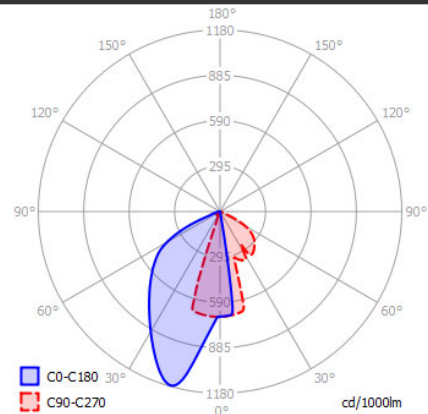
SPECIFICATIONS

MOUNTING		GROUND
POWER	[W]	13
LAMP		built-in LED
LUMINOUS FLUX*	[lm]	1410
LIGHT COLOUR	[K]	3000
CRI		>90
BEAM ANGLE	[°]	75
AVERAGE LIFETIME	[h]	L80/B50.000
LUMINOUS EFFICACY	[lm/W]	108
POWER SUPPLY	[V] [A]	220-240V AC 50/60 Hz
LED-DRIVER		INCLUDED
DIMMING		NO
THROUGH-WIRING		NO
MATERIAL		ALUMINUM
INGRESS PROTECTION		IP65
PROTECTION CLASS		I
IMPACT PROTECTION		IK06
NET WEIGHT	[kg]	3,64
GROSS WEIGHT	[kg]	3,72
COLOUR (HOUSING)		GRAPHITE

*Luminous flux values are nominal LED data at a operating temperature of 25° C



LIGHT DISTRIBUTION



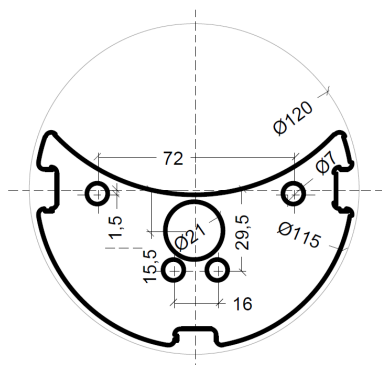
OPTIONS / OPTIONAL ACCESSORIES

Colours:

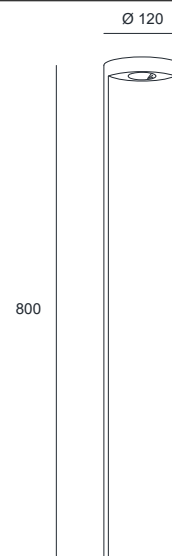


anthracite

MOUNTING DIMENSIONS



FIXTURE DIMENSIONS



DLS LIGHTING

www.dslighting.com

***DLS**
LIGHTING